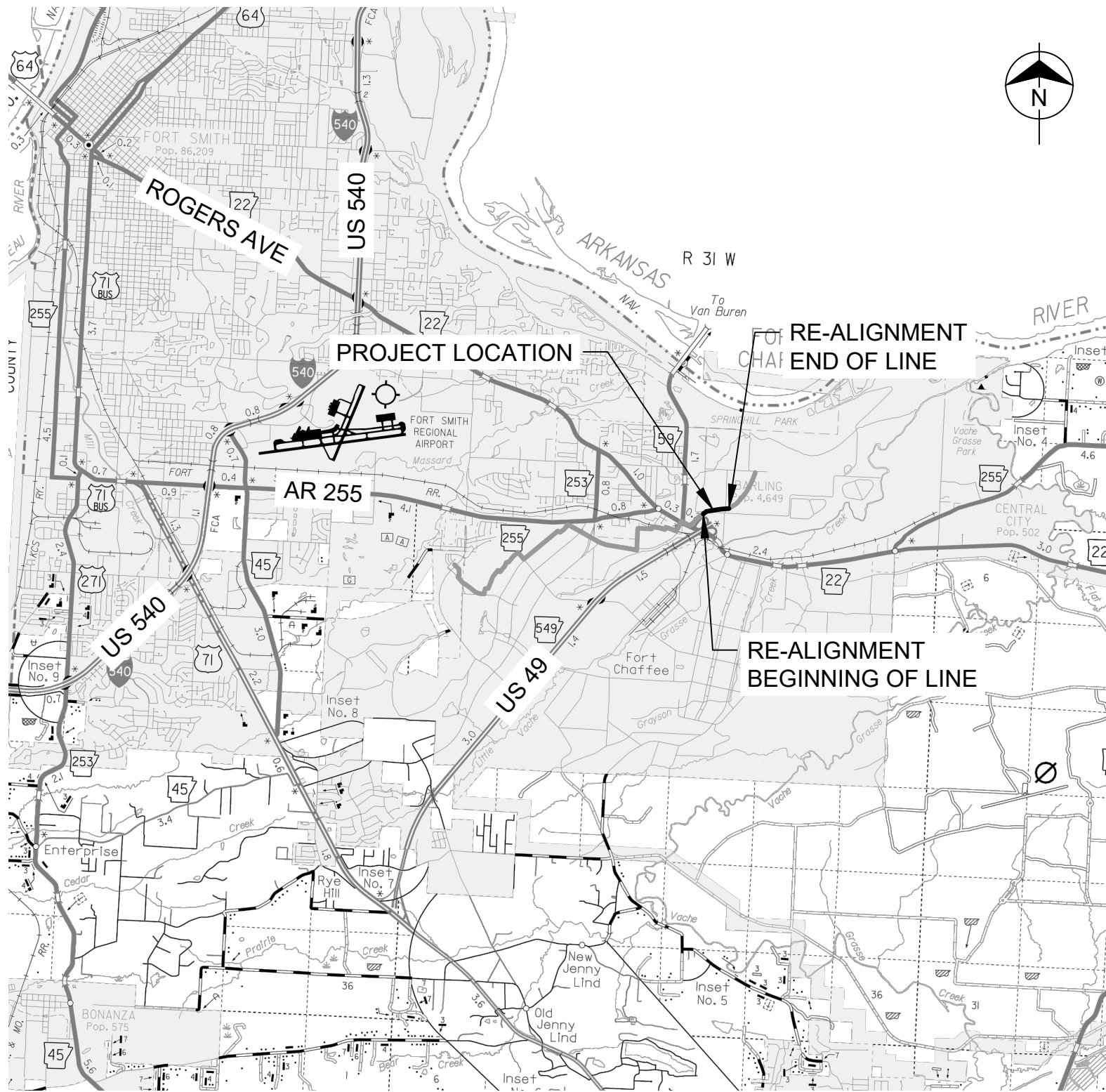




I-49 & HWY 22 TRANSMISSION LINE REALIGNMENT



PROJECT VICINITY MAP
NOT TO SCALE

INDEX

General Sheets			
1	G001	COVER & INDEX	
2	G002	GENERAL NOTES	
Plan and Profiles			
3	WL1	PLAN AND PROFILE	STA 6+00 TO STA 18+50
4	WL2	PLAN AND PROFILE	STA 18+50 TO STA 29+50
5	D001	CASING DETAILS	

ISSUED FOR BID

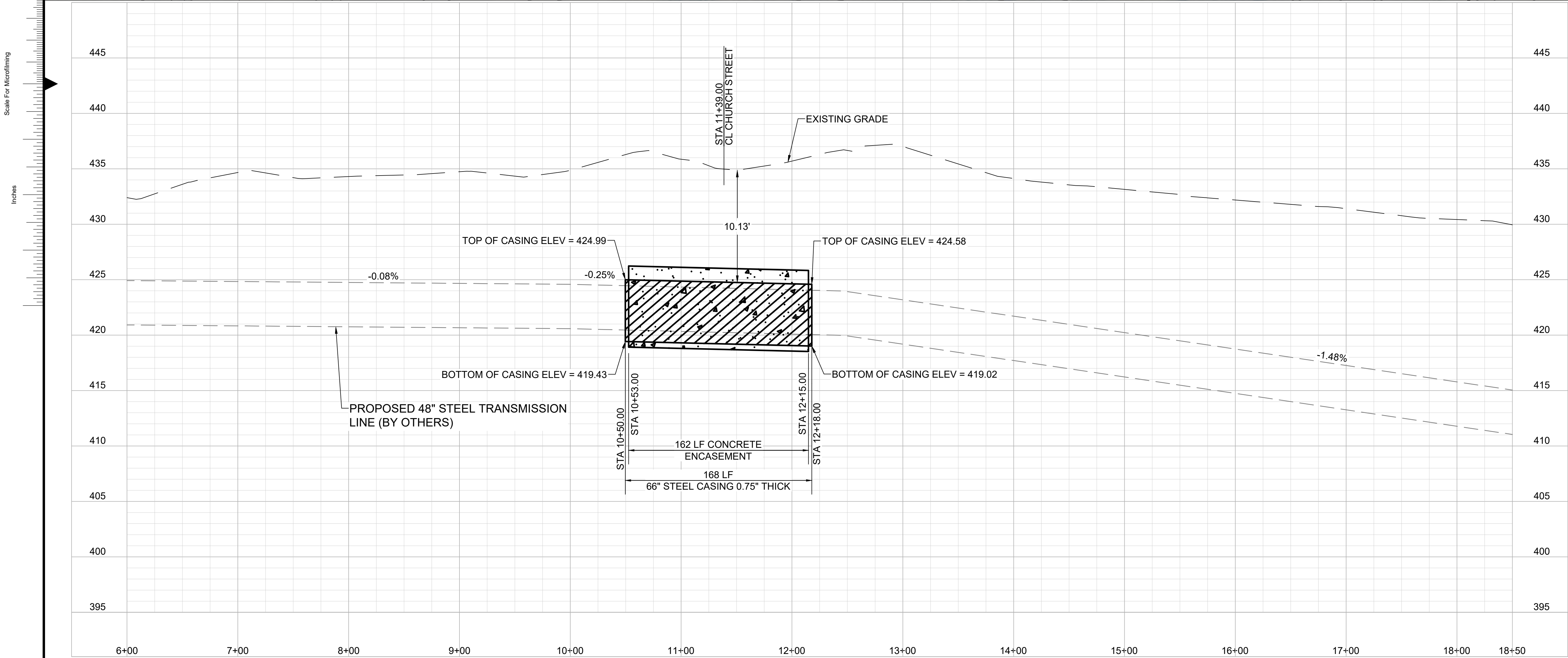
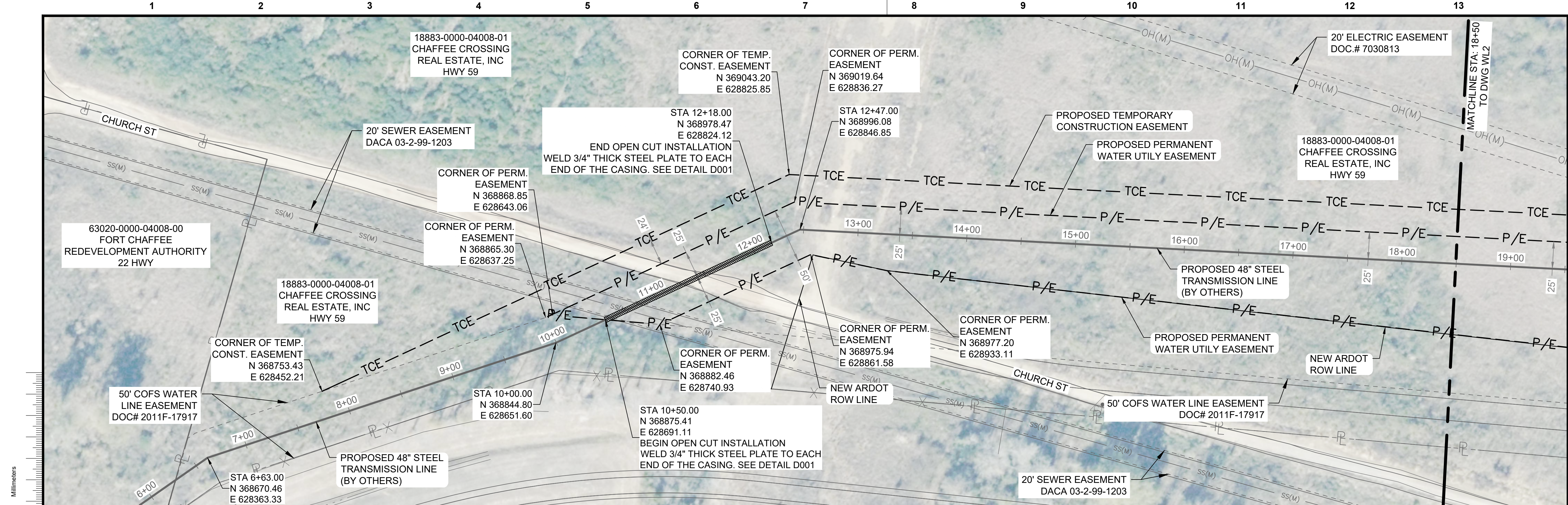
NOVEMBER 2023

City of Fort Smith Project No. 23-14-C1
Burns & McDonnell Project No 161799

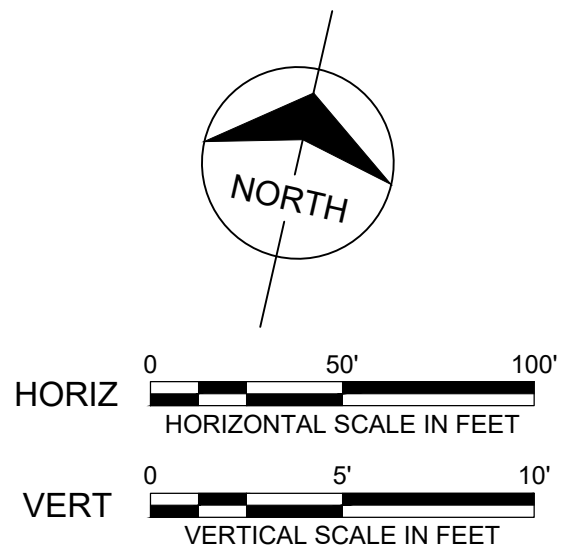
no.	date	by	ckd	description
A	11/10/23	KH	JH	ISSUED FOR BID

**BURNS
MCDONNELL**
9191 S. JAMAICA STREET
ENGLEWOOD, CO 80112
303-721-9292

Cover & Index



no.	date	by	ckd	description
A	11/10/23	KH	KL	ISSUED FOR BID



9191 S. JAMAICA STREET
ENGLEWOOD, CO 80112
303-721-9292

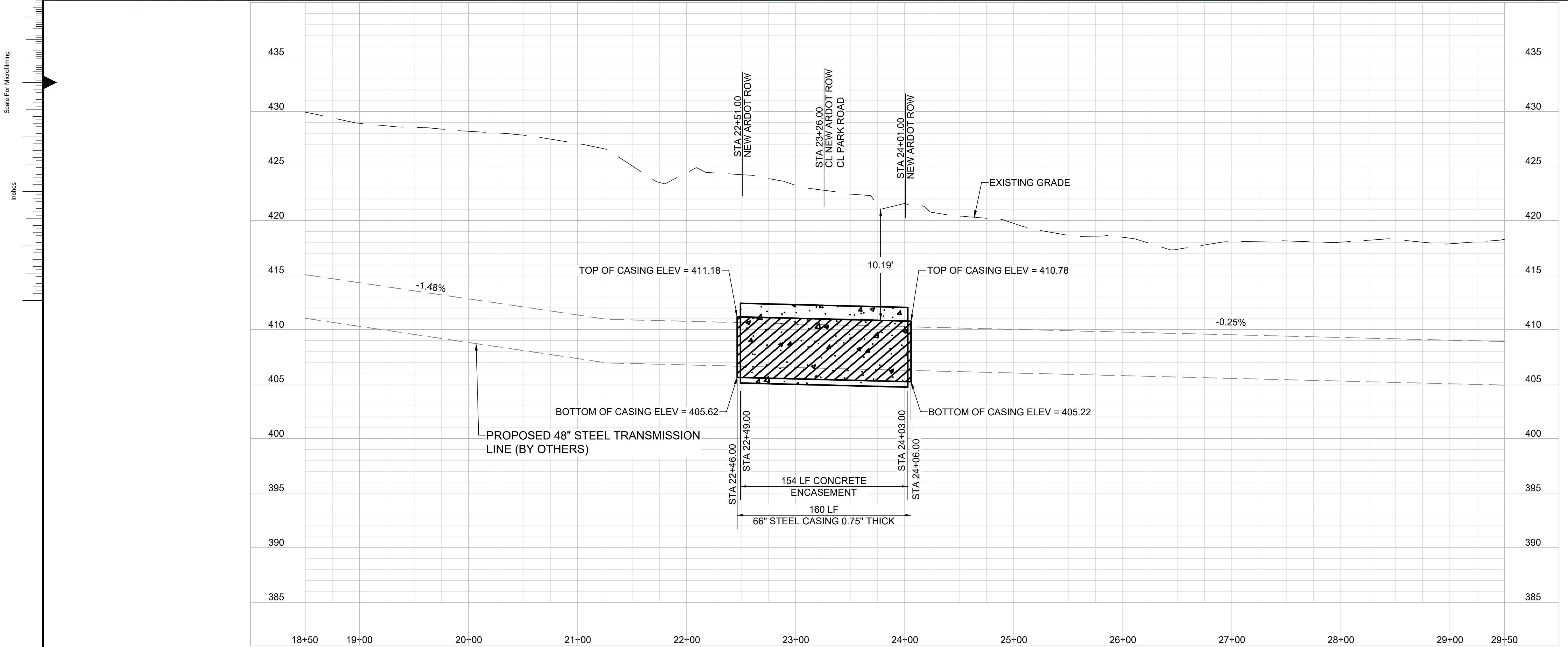
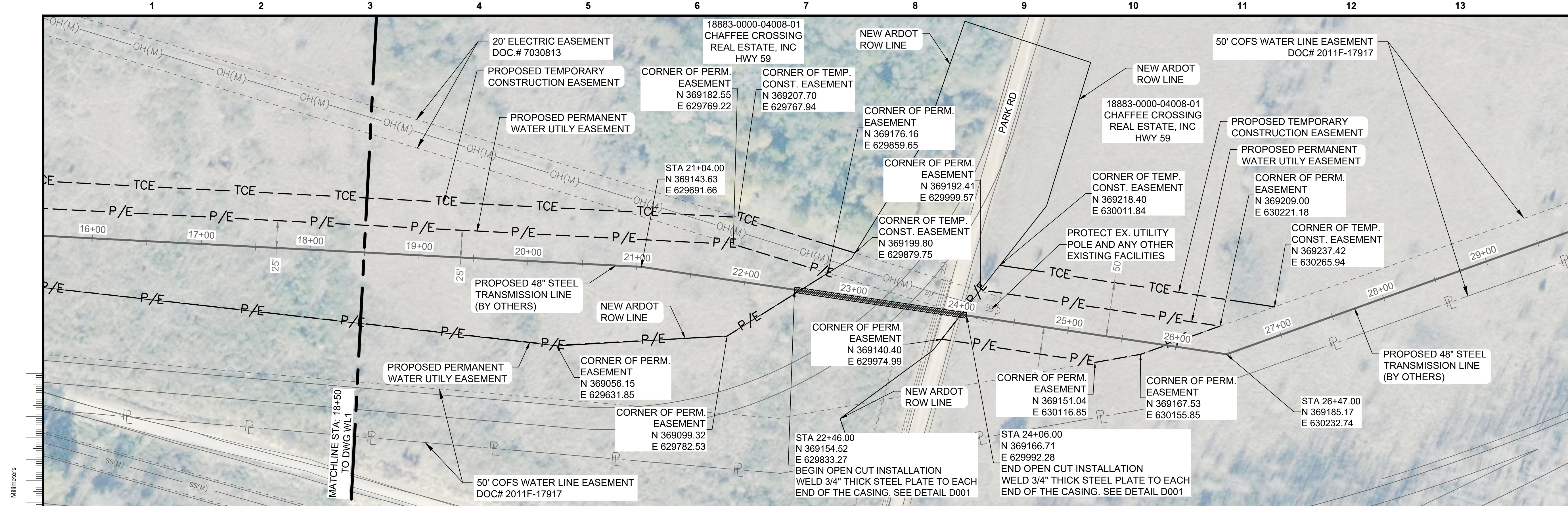
date NOVEMBER 2023	detailed K. WEISS
designed K. HENSKE	checked J. HEIDRICK



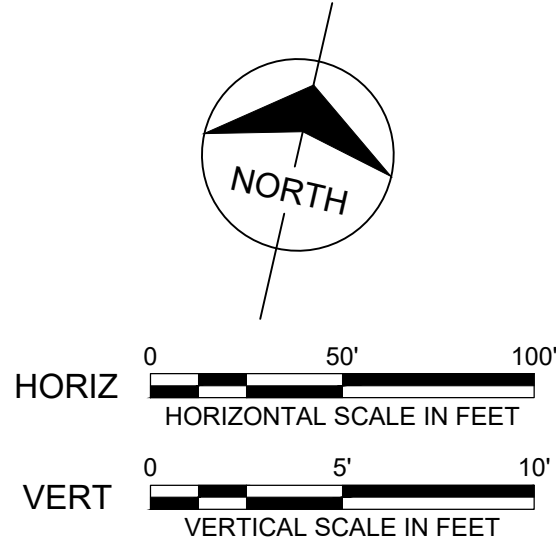
SEBASTIAN COUNTY, ARKANSAS

LAKE FORT SMITH
I-49 & HWY 22 TRANSMISSION LINE
RE-ALIGNMENT
STA 6+00 TO STA 18+50

project 161799	contract 23-14-C1
drawing WL1	rev. A
sheet 3	of 5
file 161799_WL1.dwg	sheets



no.	date	by	ckd	description
A	11/10/23	KH	KL	ISSUED FOR BID



9191 S. JAMAICA STREET
ENGLEWOOD, CO 80112
303-721-9292

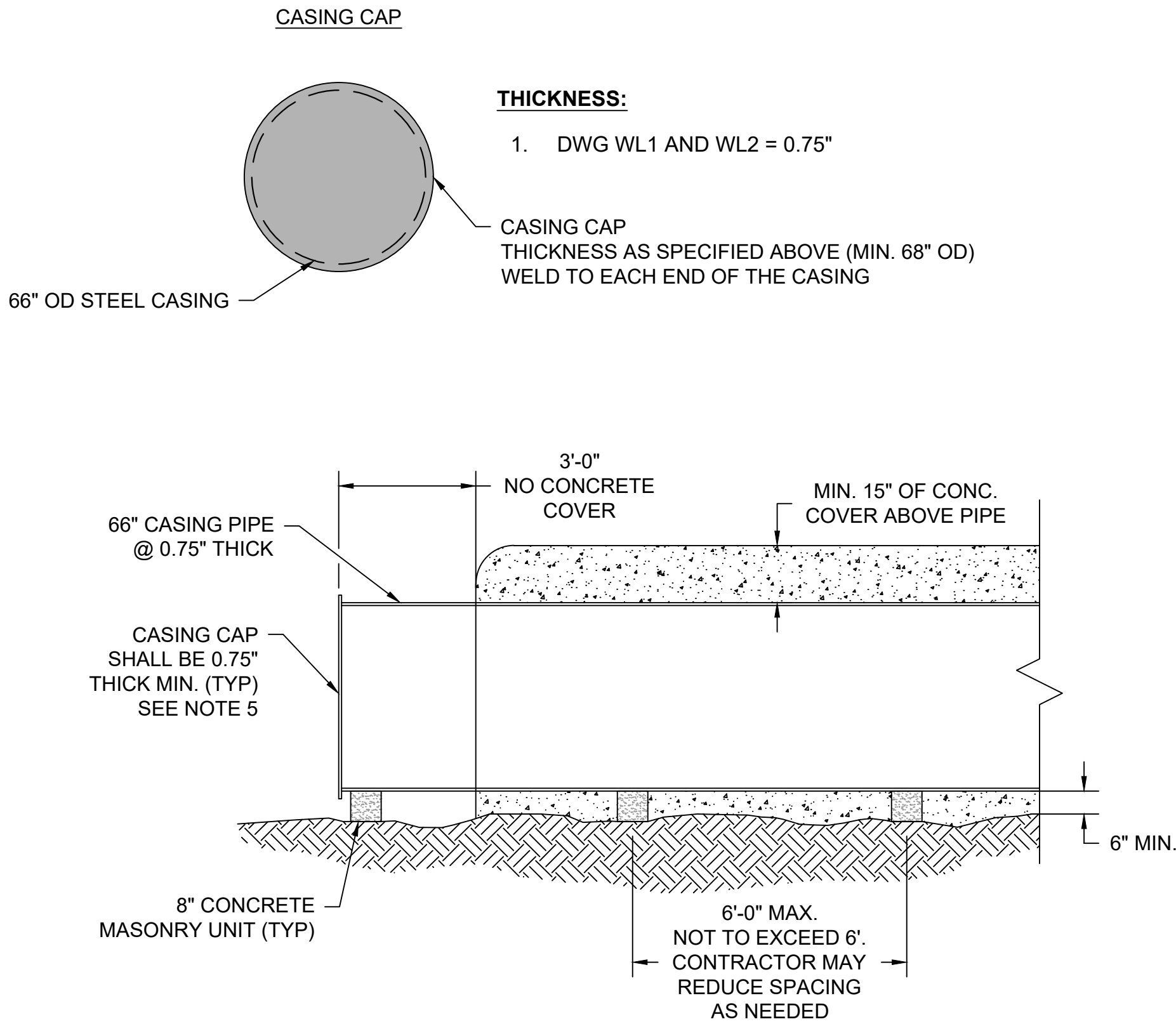
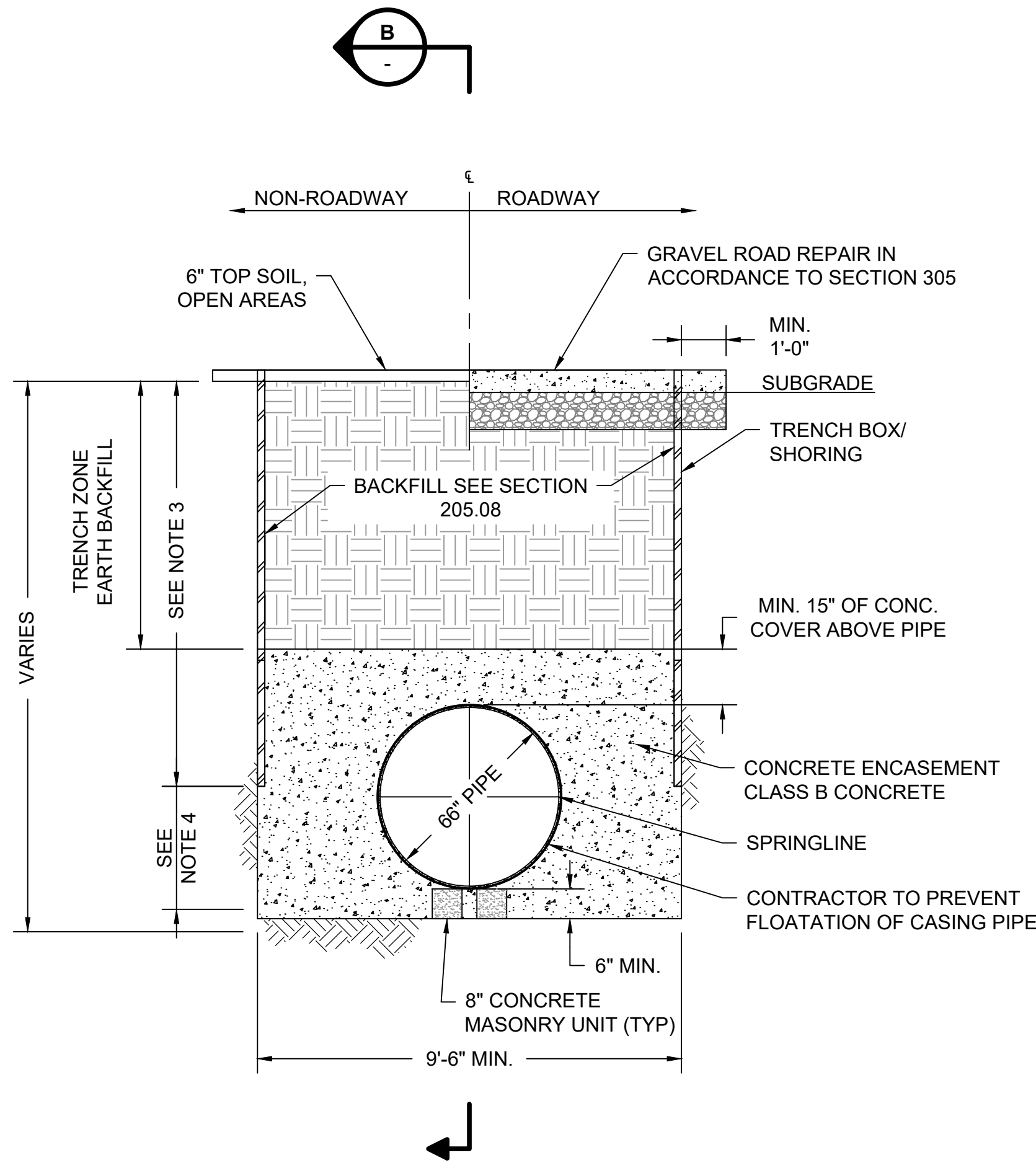
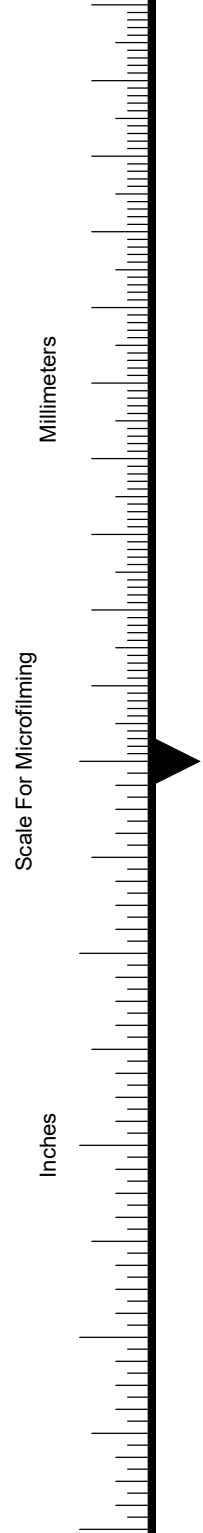
date NOVEMBER 2023	detailed K. WEISS
designed K. HENSKE	checked J. HEIDRICK



SEBASTIAN COUNTY, ARKANSAS

**LAKE FORT SMITH
I-49 & HWY 22 TRANSMISSION LINE
RE-ALIGNMENT**
STA 18+50 TO STA 29+50

project 161799	contract 23-14-C1
drawing WL2	rev. A
sheet 4 of 5 sheets	file 161799_WL2.dwg



TYPICAL EXCAVATION AND
CLSM BEDDING DETAIL
FOR OPEN CUT CASING

NOTES:

1. REFER TO SECTION 205 - TRENCH OR EXCAVATION SAFETY SYSTEMS. ALL WORK MUST CONFORM TO CURRENT OSHA REQUIREMENTS.
2. OVER EXCAVATE AND USE STABILIZATION MATERIAL WHEN WET AND UNSUITABLE OR UNEXPECTED TRENCH CONDITIONS ARE FOUND DURING CONSTRUCTION. STABILIZATION SHALL BE INCIDENTAL TO PIPE CASING.
3. PIPE EMBEDMENT ZONE MUST BE FILLED AND RECOMPACTED TO SPECIFIED DENSITIES UPON REMOVAL OR MOVEMENT OF TRENCH SAFETY SYSTEM.
4. ADJUST HEIGHT OF UNSUPPORTED TRENCH AS NEEDED FOR SAFE CONDITIONS IN ACCORDANCE WITH CURRENT OSHA REQUIREMENTS.
5. CASING PIPE SHALL HAVE 3/4" STEEL CASING CAP ATTACHED ON EACH END. STEEL CAP MUST BE WELDED IN SUCH A MANNER TO MAINTAIN WATERTIGHTNESS AS SPECIFIED IN SECTION 205.06 - PIPE CASING.

no.	date	by	ckd	description
A	11/10/23	KH	KL	ISSUED FOR BID

9191 S. JAMAICA STREET
ENGLEWOOD, CO 80112
303-721-9292

date	NOVEMBER 2023	detailed	K. WEISS
designed	K. HENSKE	checked	J. HEIDRICK

SEBASTIAN COUNTY, ARKANSAS

LAKE FORT SMITH
I-49 & HWY 22 TRANSMISSION LINE
RE-ALIGNMENT
CASING DETAILS

project	161799	contract	23-14-C1
drawing	D001	rev.	A
sheet	6	of	5 sheets
file 161779_D001.dwg			